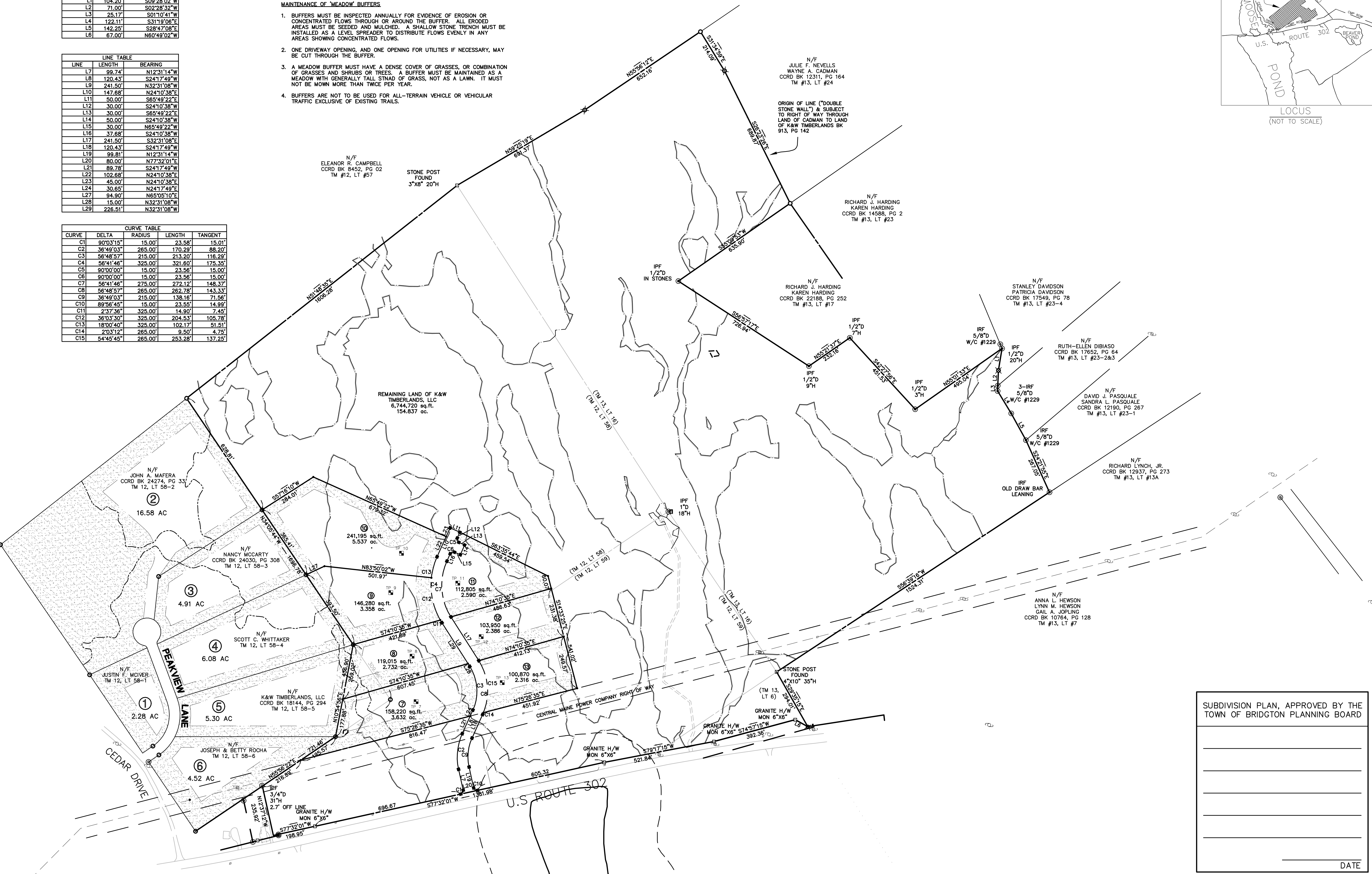


LINE	LENGTH	BEARING
L1	104.20'	S09°28'02"W
L2	71.00'	S02°28'32"W
L3	25.17'	S01°10'41"W
L4	122.11'	S31°19'06"E
L5	142.25'	S28°47'08"E
L6	67.00'	N60°49'02"E

LINE	LENGTH	BEARING
L7	99.74'	N12°31'14"W
L8	120.43'	S24°17'49"W
L9	241.50'	N32°31'08"W
L10	147.68'	N24°10'38"E
L11	50.00'	S65°49'22"E
L12	30.00'	S24°10'38"W
L13	30.00'	S65°49'22"E
L14	50.00'	S24°10'38"W
L15	30.00'	N65°49'22"W
L16	37.68'	S24°10'38"W
L17	241.50'	S32°31'08"E
L18	120.43'	S24°17'49"W
L19	99.81'	N12°31'14"W
L20	80.00'	N77°32'01"E
L21	89.78'	S24°17'49"W
L22	102.68'	N24°10'38"E
L23	45.00'	N24°10'38"E
L24	30.65'	N24°17'49"E
L27	94.90'	N65°05'10"E
L28	15.00'	N32°31'08"W
L29	226.51'	N32°31'08"W

CURVE	DELTA	RADIUS	LENGTH	TANGENT
C1	90°03'15"	15.00'	23.58'	15.01'
C2	36°49'03"	265.00'	170.29'	88.20'
C3	56°48'57"	215.00'	213.20'	116.29'
C4	56°41'46"	325.00'	321.60'	175.35'
C5	90°00'00"	15.00'	23.56'	15.00'
C6	90°00'00"	15.00'	23.56'	15.00'
C7	56°41'46"	275.00'	272.12'	148.37'
C8	56°48'57"	265.00'	262.78'	143.33'
C9	36°49'03"	215.00'	138.16'	71.56'
C10	89°56'45"	15.00'	23.55'	14.99'
C11	2°37'36"	325.00'	14.90'	7.45'
C12	36°03'30"	325.00'	204.53'	105.78'
C13	18°00'40"	325.00'	102.17'	51.51'
C14	2°03'12"	265.00'	9.50'	4.75'
C15	54°49'46"	265.00'	253.28'	137.25'

- MEADOW BUFFER ZONE**
- MAINTENANCE OF "MEADOW" BUFFERS**
1. BUFFERS MUST BE INSPECTED ANNUALLY FOR EVIDENCE OF EROSION OR CONCENTRATED FLOWS THROUGH OR AROUND THE BUFFER. ALL ERODED AREAS MUST BE SEEDED AND MOWED. A SHALLOW STONE TRENCH MUST BE INSTALLED AS A LEVEL SPREADER TO DISTRIBUTE FLOWS EVENLY IN ANY AREAS SHOWING CONCENTRATED FLOWS.
 2. ONE DRIVEWAY OPENING, AND ONE OPENING FOR UTILITIES IF NECESSARY, MAY BE CUT THROUGH THE BUFFER.
 3. A MEADOW BUFFER MUST HAVE A DENSE COVER OF GRASSES, OR COMBINATION OF GRASSES AND SHRUBS OR TREES. A BUFFER MUST BE MAINTAINED AS A MEADOW WITH GENERALLY TALL STAND OF GRASS, NOT AS A LAWN. IT MUST NOT BE MOWN MORE THAN TWICE PER YEAR.
 4. BUFFERS ARE NOT TO BE USED FOR ALL-TERRAIN VEHICLE OR VEHICULAR TRAFFIC EXCLUSIVE OF EXISTING TRAILS.



SUBDIVISION PLAN, APPROVED BY THE TOWN OF BRIDGTON PLANNING BOARD

DESIGNED _____

DRAWN _____

CHECKED _____

SCALE 1" = 200'

DATE AUGUST 20, 2008

PROJECT NO. 3604-01

DATE _____

MILONE & MACBROOM
 Registered Landscape Architecture and Environmental Science
 20 Independence Drive
 3rd Floor
 Freeport, ME 04032
 (207) 865-1358
 www.miloneandmacbroom.com

REVISIONS
SEPT. 23, 2008

SUBDIVISION MAP
PLEASANT VIEW ESTATES
 ROUTE #302
 BRIDGTON, MAINE